

# Winning ways

THE PRESENCE of two elite Grandmasters made this year's West German championship in Bochum especially interesting for two reasons. One was the sheer power with which Lubomir Kavalek and Vlastimil Hort spreadeagled the opposition. The other was the contrast in styles with which they did so.

Both Hort, from Czechoslovakia, and Kavalek, a Czech emigre now living in America, usually campaign only in super-class tournaments. While Bochum, with 10 other international masters and grandmasters, was by no means weak, the presence of these two turned it into simply a gladiatorial race for wins.

In the end it was Kavalek who maintained the pace longest. His practical, well-rounded style and excellent general chess knowledge proved particularly suited to disposing of your average IM or GM. Even as Black in such innocuous openings as the Queen's Gambit Accepted, his superior foresight and deadly accurate moves still enabled him to seek the advantage.

By the 13th round he led with the remarkable total of nine wins and four draws, and the sprint was over.

Kavalek scored 12 out of 15, Hort came second with 10½ and I was third on 9½.

Hort's problem was the clock. Although he had a marginally higher rating than his former countryman, he soon found that his idealistic approach was not quite reaping the same rewards as Kavalek's more direct style against this particular standard of opposition. In the first half of each game Hort's deep and original early middlegame play invariably wrested him the better position. But the time scrambles that followed equally invariably introduced an element of chance and cost him points on occasion.

## CARO KANN DEFENCE

J. VAN DER WIEL V. HORT

- |         |     |
|---------|-----|
| 1. e4   | c6  |
| 2. d4   | d5  |
| 3. e5   | Bf5 |
| 4. Nc3  | e6  |
| 5. g4   | Bg6 |
| 6. Nge2 | Bb4 |
| 7. Nf4? |     |

Better was 7.h4. The move played means that White's queenside pawns will be crippled when Black captures on c3.

- |          |         |
|----------|---------|
| 7. ...   | Ne7     |
| 8. a3    | Bxc3 ch |
| 9. bxc3  | Qa5     |
| 10. Bd2  | Nd7     |
| 11. h4   | Qa4     |
| 12. Ra2  | h6      |
| 13. Nxc6 | Nxc6    |
| 14. Bd3  | Ne7     |
| 15. Rb2  | b5      |
| 16. f4   | g6      |

After 16... Qxa3 17.Qb1 Qa6 18.f5 Black would have no haven for his king and might further suffer from his dark-squared weaknesses should White later re-route his bishop by Bc1, Ra2 and then Ba3.

17. h5 0-0-0

- |           |      |
|-----------|------|
| 18. Kf2   | Nb6  |
| 19. Bc1   | Nc4  |
| 20. Rb4   | Qa5  |
| 21. a4    | a6   |
| 22. Qf3   | Rd7  |
| 23. f5    | gxf5 |
| 24. gxh5  | c5!  |
| 25. dxc5  | Nxe5 |
| 26. Qg3   | N7c6 |
| 27. Bxb5! |      |

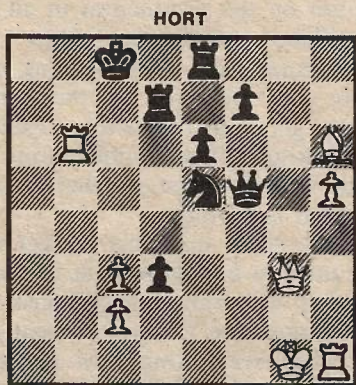
A tricky piece sacrifice which Hort returns almost immediately to retain a safe advantage.

- |          |      |
|----------|------|
| 27. ...  | axb5 |
| 28. axb5 | Re8! |

Extremely hazardous would be 28...Nxb4 29. Qxe5.

- |          |         |
|----------|---------|
| 29. bxc6 | Nxc6    |
| 30. Rb3  | Qxc5 Ch |
| 31. Be3  | d4!     |
| 32. Bxh6 | Qxf5 ch |
| 33. Kg1  | d3      |
| 34. Rb6  | Ne5     |

With his far-advanced d-pawn and White's exposed King, Hort clearly has a winning advantage. He was, however, running into serious time pressure by this stage — having to make the remaining six moves in under two minutes or lose by time forfeit.



35. Rh4!

An excellent move against a time-troubled opponent. Not only must Black calculate that after 35...Nf3 ch 36. Kh1 the rook on h4 is taboo because of mate on b8, but he must also squirm about threats of Rhb4 or Rc4 ch.

- |         |     |
|---------|-----|
| 35. ... | d2! |
|---------|-----|

So far so good.

- |             |       |
|-------------|-------|
| 36. Rc4 ch  | Rc7   |
| 37. Rxc7 ch | Kxc7  |
| 38. Rb1     | Qxh5? |

Correct was 38...Rd8 39. Rd1 Ke8 breaking the pin, and if 40. Bxd2 then 40...Nf3 ch forks king and bishop.

- |           |       |
|-----------|-------|
| 39. Bxd2! | Rh8?? |
| 40. Bf4   |       |

The tables are suddenly turned, metaphorically. Hort began to wish it was physically. What he had missed was that after 40...Qh1 ch 41. Kf2 Black has no plausible checks and 41...Qxb1 42. Bxe5 ch is followed by Bxh8. In panic he bashed out his final move and offered "remis?"

- |         |    |
|---------|----|
| 40. ... | f6 |
|---------|----|

Van der Wiel's response to the draw offer was to ask for the sealed-move envelope! After 41. Qg7 ch Black is totally lost — eg 41...Kc8 42. Qb7 ch Kd8 43. Qb8 ch followed by 44. Rb7 ch. So Hort resigned without resuming.

MURRAY CHANDLER